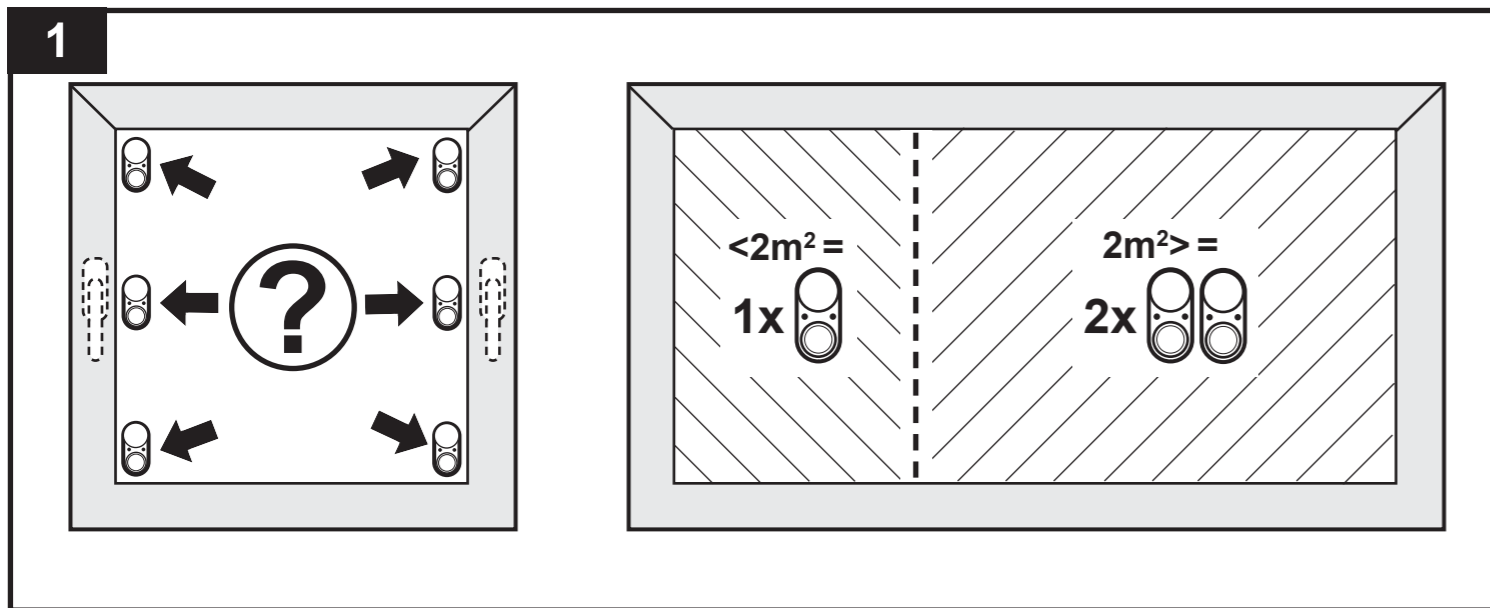
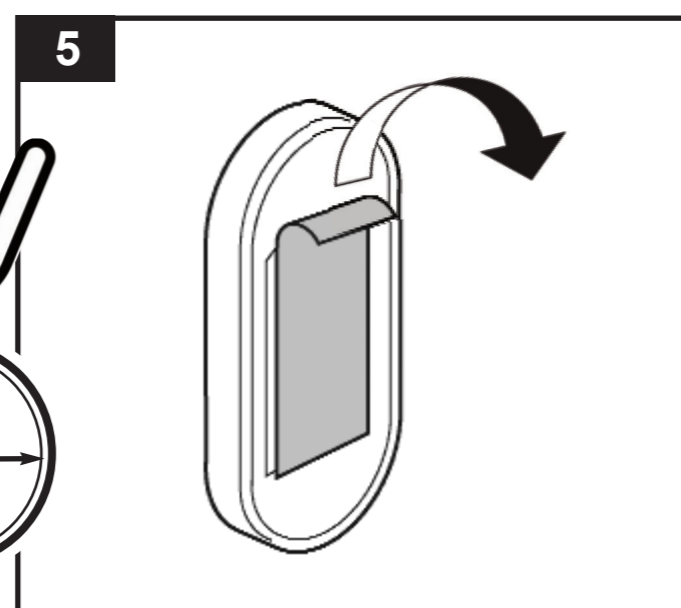
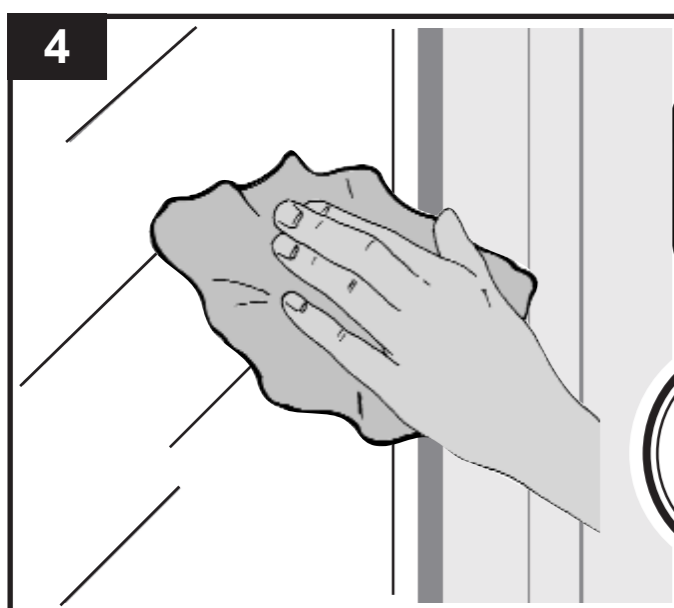
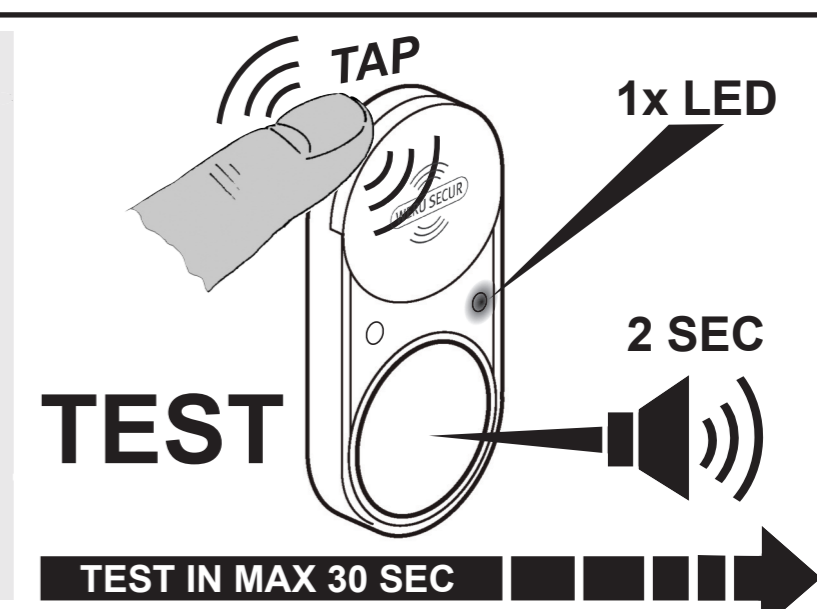
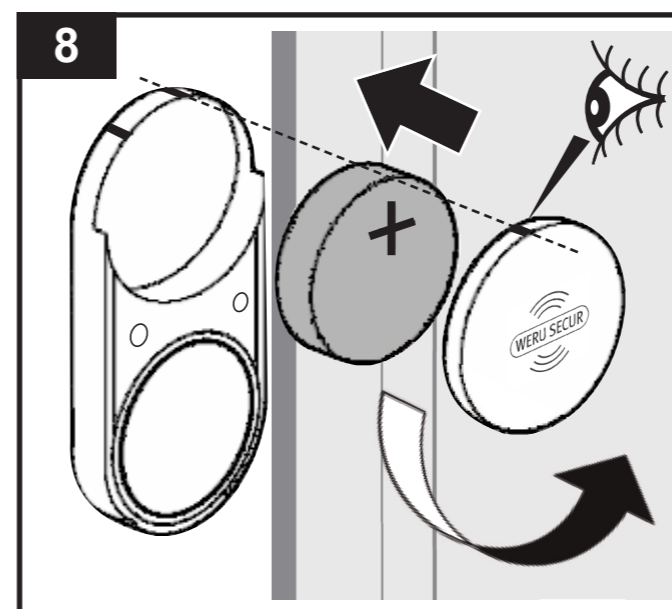
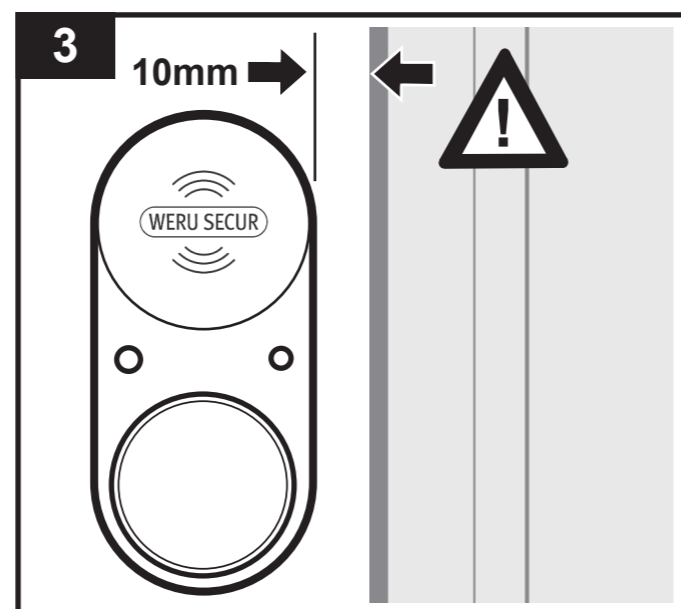
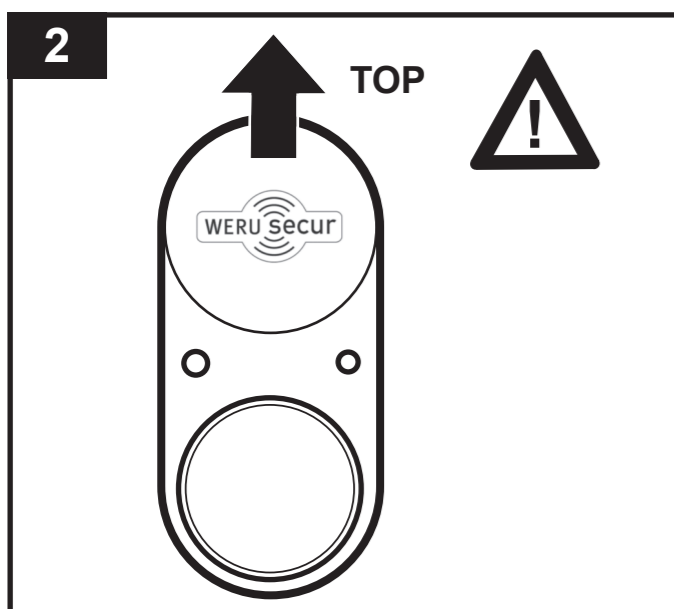
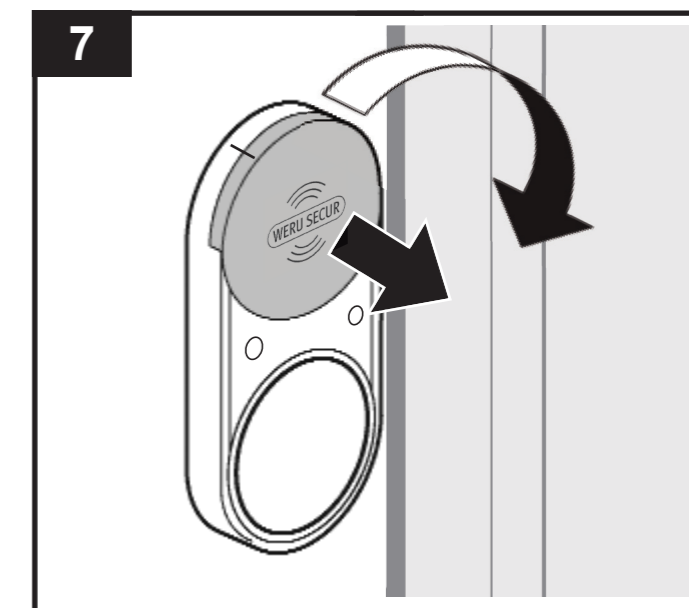
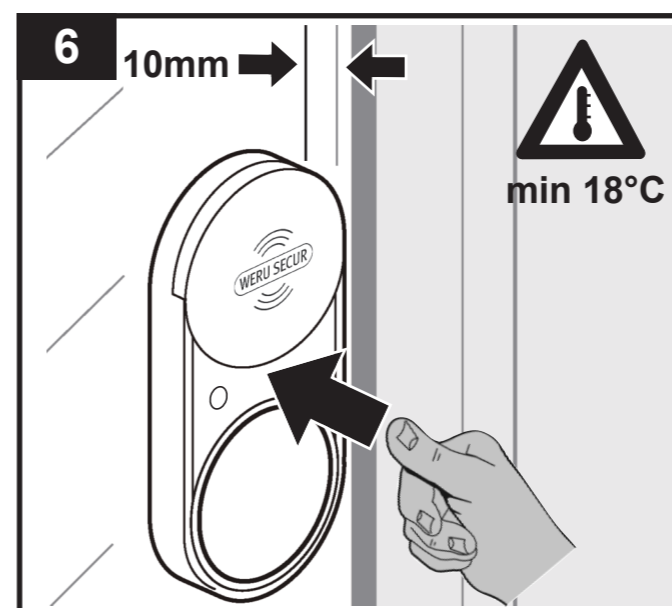


Einbauanleitung - Fitting instructions - Instructions de montage



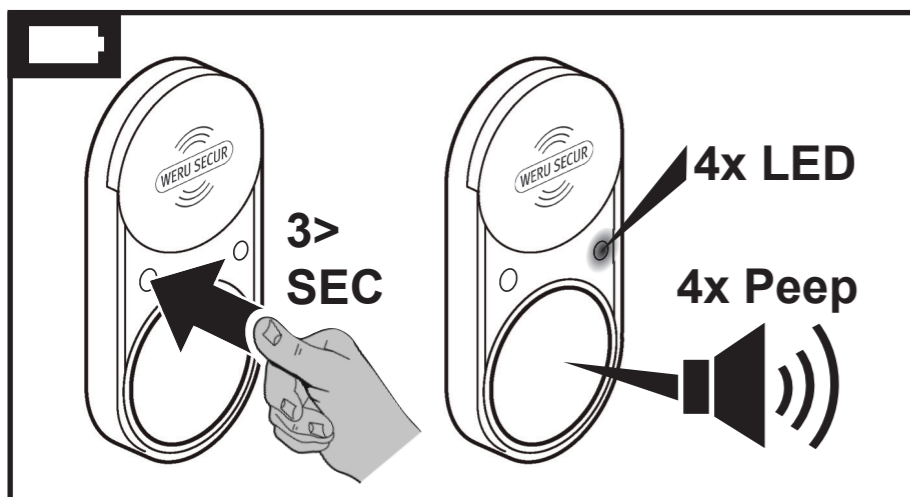
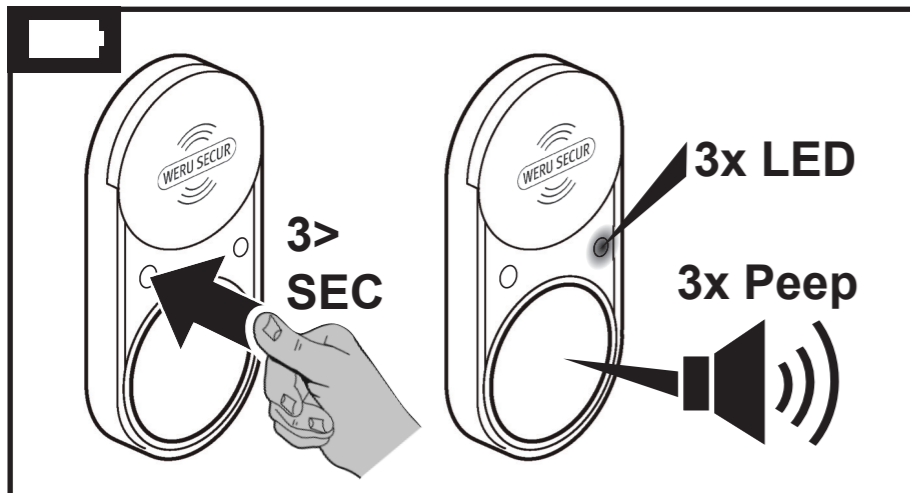
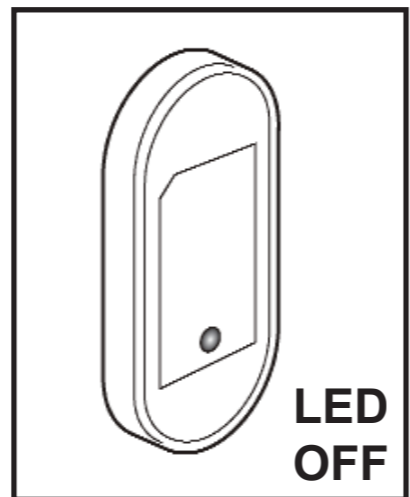
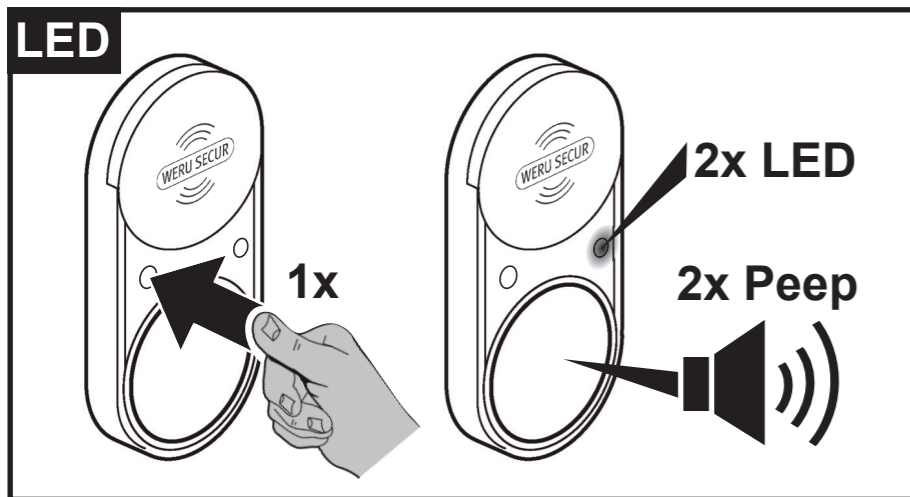
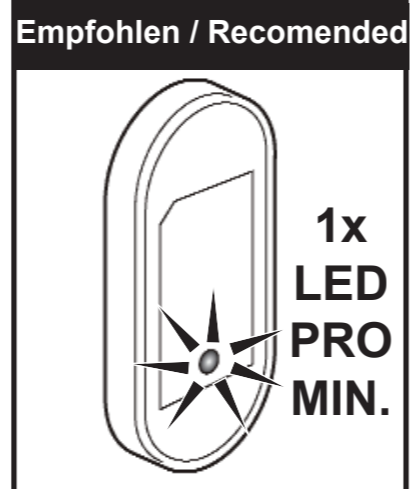
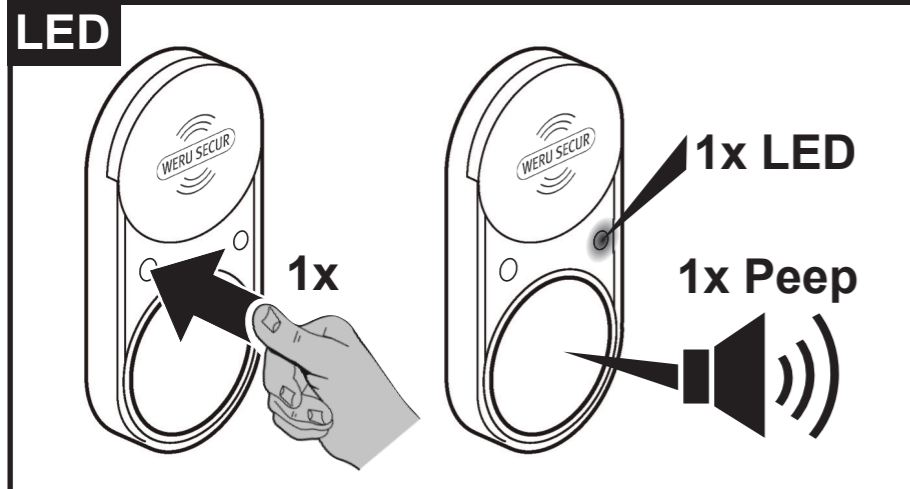
Einbauanleitung - Fitting instructions - Instructions de montage



ACHTUNG: Diese Funktion ist nur für 30 Sec. aktiv nachdem die Batterie eingelegt wurde.

ATTENTION: This function is only active for 30 seconds after the battery has been installed and the cover re-fitted.

Bedienungsanleitung - Operating Manual - Mode d'emploi



WERU

Fenster und Türen fürs Leben

Bauen Sie den Fensterrahmen nach den WERU-Montagerichtlinien ein. (Weitere Informationen finden Sie in der Dataline)

Stand: April 2011
Ausführung Nr. 3

Bedienungsanleitung Glasbruchmelder



H110007